

# HOW DO I CHOOSE THE RIGHT WAX?

Find out how to do this and many other tasks around your boat with: **Shurhold Clean-N-Simple Video Tips**



Scan now or visit [shurhold.com/tips](http://shurhold.com/tips) for the latest in how-to videos.

## FREE SAMPLE!



Receive a **FREE** 1 oz. sample of Pro Polish at [shurhold.com/free](http://shurhold.com/free)

Project boat provided by

**Wellcraft**  
[www.wellcraft.com](http://www.wellcraft.com)

**SHURHOLD**  
CLEAN-N-SIMPLE  
[www.shurhold.com](http://www.shurhold.com)



GOOD FOUNDATION

BoatU.S. FOUNDATION FOR BOATING SAFETY AND

## REEL IN & RECYCLE!

*It's easy — and cheap! — to build a recycling bin to collect used fishing line, and do your part to keep it out of the water*

**S**INCE 2007 THE BOATU.S. FOUNDATION Monofilament Fishing Line Recycling Program's network of more than 2,000 recycling bins has helped recycle 5,200 miles of fishing line. Left in the water, this old line is a hazard to birds and marine life and can wreak havoc on your prop. These bins, installed at the water's edge, make it easy for anglers to recycle used fishing line and keep it out of the water. Building a bin is simple.

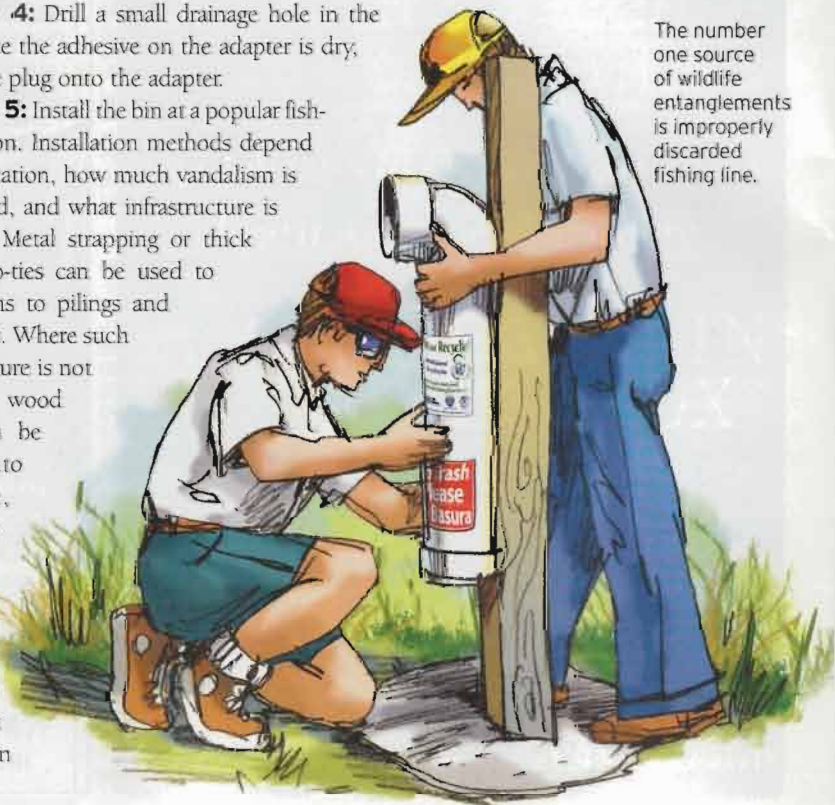
**STEP 1:** With the plug removed and set aside, apply adhesive to the female-threaded adapter and slide it onto the two-foot length of pipe.

**STEP 2:** Apply adhesive to one end of the elbow, and slide that over the other end of the pipe. Look for any markings or writing on the pipe and position the opening of the elbow opposite any marks.

**STEP 3:** Apply decals to the bin's front below the opening of the elbow. The BoatU.S. Foundation is happy to supply decals free of charge. Email [cleanwater@BoatUS.com](mailto:cleanwater@BoatUS.com) to request decals.

**STEP 4:** Drill a small drainage hole in the plug. Once the adhesive on the adapter is dry, thread the plug onto the adapter.

**STEP 5:** Install the bin at a popular fishing location. Installation methods depend on the location, how much vandalism is anticipated, and what infrastructure is available. Metal strapping or thick plastic zip-ties can be used to secure bins to pilings and light posts. Where such infrastructure is not available, wood posts can be sunk into concrete, and bins can be bolted directly to the posts. It's important to obtain



The number one source of wildlife entanglements is improperly discarded fishing line.

**TECH SUPPORT**

*Degree Of Difficulty*



**MATERIALS:**

- 2 feet of 6-inch-diameter PVC pipe
- 6-inch-diameter PVC elbow
- 6-inch-diameter PVC female-threaded adapter
- 6-inch-diameter PVC plug
- Polyurethane adhesive
- Decals (provided by the BoatU.S. Foundation)

any necessary permission before installing the bins.

When selecting a location for a bin, try to locate them near launch ramps, fish-cleaning stations, or other locations convenient to anglers. Place the bin near existing trash and recycling containers to help reduce the amount of trash in the bin.

It's important to maintain and empty the bin regularly. Collected line can be mailed to Berkley Conservation for recycling. Their address, along with more info on fishing line recycling and a short video on bin construction, can be found at [www.BoatUS.com/Foundation/Monofilament](http://www.BoatUS.com/Foundation/Monofilament)

The BoatU.S. Foundation Mono-filament Fishing Line Recycling Program was funded by grants from the NOAA Marine Debris Program and the National Fish and Wildlife Foundation. Those grants have come to a close. The program is maintained through the generous donations of BoatU.S. members.

*The BoatU.S. Foundation, a non-profit 501(c)(3) organization devoted to implementing projects that keep boaters safer and our waterways clean, is independently funded by donations from BoatU.S. members and by grants. [www.BoatUS.com/Foundation](http://www.BoatUS.com/Foundation)*



What big teeth you have.

BARRACUDA

Whether your passion leans toward fishing, diving or just cruising with attitude, the Barracuda has the teeth to handle it. Its modular design can accommodate any pastime, and Beneteau's patented Air Step® hull technology makes it hungry for rough waters.

For more info or a dealer near you, visit [Barracuda9.com](http://Barracuda9.com).

BENETEAU

Inquiries: 410.990.0270 or [Power@Beneteau.com](mailto:Power@Beneteau.com)